



BACARDÍ

DEC 11-13, 2020

INVITATIONAL WINTER SERIES

Event #1

MIAMI, FLORIDA, U.S.A

December 11-13, 2020 (J/70, Melges 24 & VX1)

SAILING INSTRUCTIONS

The organizing authority is Twelve USA, INC. The host facility is Shake a Leg Miami (SALM), 2620 S Bayshore Drive. The invited classes are Melges 24, J/70 and VX One.

1. RULES

1.1 The regatta will be governed by the rules as defined in *The Racing Rules of Sailing* (RRS).

1.2 Rules and US Sailing prescriptions which are applicable are: rule 61.4, Appendix R, and prescriptions to rules 40, 60.3, 67, 70.5(a), 76.1 and Appendix V. These will be posted on the official notice board. No other prescriptions are applicable. The penalty specified in Appendix V2 is changed to be 20 % as in App V2.

1.3 Except for the rules of RRS PARTS 2 and 3, the jury may impose an alternate penalty less than DSQ for breaking a rule, in accordance with RRS 64.1.

1.4 If there is a conflict between languages, the English text will take precedence.

1.5 All boats shall carry a functioning VHF radio for emergencies and monitoring the race committee. The VHF channel is **72**. If the channel is changed notice will be posted on the signal vessel.

1.6 The rules of the classes will be in effect, except where changed in the notice of race (NOR) and these sailing instructions (SI).

1.7 If there is a conflict between the NOR, SI, or with class rules, the sailing instructions will take precedence. This changes RRS 63.7.

2. NOTICES TO COMPETITORS

2.1 Notices to competitors will be posted on the official notice board on yachtscoring.com

3. CHANGES TO THE SAILING INSTRUCTIONS

3.1 Any change to the SI will be posted before 0900 on the day it will take effect, except that any change to the schedule of races will be posted by 2000 on the day before it will take effect.

4. SIGNALS MADE ASHORE

4.1 Signals made ashore will be displayed from the flag pole at SALM and at USSC. When flag **AP** is displayed ashore, '1 minute' is replaced with 'not less than 60 minutes' in RACE SIGNAL **AP**.

5. SCHEDULE OF EVENTS

Friday, December 11 th	Zoom Skippers Meeting	1800 hours
Saturday, December 12 th	First Warning VX One	1000 hours
	Target Warning Melges 24	1100 hours
	Target Warning J70	1200 hours
Sunday, December 13 th	First Warning Melges 24	1000 hours
	Target Warning J70	1100 hours
	Target Warning VX One	1200 hours

6. CLASS FLAGS

6.1 Class flags will be the Melges 24, the J/70 or the VX One class insignia on a white background.

7. RACING AREA

7.1 The racing area will be on Biscayne Bay approximately 2 - 3 nm south of Dinner Key Channel marker number "1". **ILLUSTRATION A - RACING AREA.**

8. COURSES

8.1 No later than the warning signal for the class, the race committee signal vessel will display the course designation, the approximate compass bearing, and the length of the first leg.

8.2 For the Melges 24 and J70 the courses will be windward/leeward with a windward offset and a gate(s).

8.3 For the VX1 the course will be trapezoid.

8.4 Reference Illustration B – Courses

9. MARKS FOR MELGES 24 & J70 FLEETS

9.1 Melges 24 windward mark **1A** will be an orange MarkSetBot (MSB). The offset mark for Mark 1A will be red ball positioned at approximately 90 degrees to port of mark 1A. Both marks shall be left to port.

9.2 J70 windward mark 1B will be a green tetrahedron. The offset mark for Mark 1B will be a red ball positioned at approximately 90 degrees to port of mark 1B. Both marks shall be left to port.

9.3 Leeward marks **4s** and **4p** will be a gate between orange MSB. Boats will sail between the gate marks from the previous mark and may round either mark.

9.4 If only a single mark is present at the location for mark **1A** and **mark 1B** or **2**, boats shall leave the mark to port.

9.5 Routine movement of autonomous marks will not be grounds for redress.

10. MARKS FOR VX ONE FLEET

10.1 VX One windward mark **1A** will be an orange MarkSetBot (MSB). The offset mark for Mark 1A will be red ball positioned at approximately 90 degrees to port of mark 1A. Both marks shall be left to port.

10.2 The reaching mark 2 will be an orange MSB left to port.

10.3 Leeward marks **3s** and **3p** will be a gate between orange cylinders. Boats will sail between the gate marks from the previous mark and may round either mark.

11. THE START

10.1 Races will be started by using RRS 26 with the warning signal made 5 minutes before the starting signal.

10.2 The starting line will be between a staff displaying an orange flag on a race committee vessel at the starboard end and an orange MSB.

10.3 When applicable, flag **X** will be displayed for up to **4** minutes. This changes RRS 29.1.

10.4 A boat that does not start within 4 minutes after her starting signal will be scored Did Not Start without a hearing. This change RRS A4 and A5.

10.5 If a boat is identified on the course side of the starting line at the starting signal the race committee will attempt to broadcast the bow number, or if the boat is identified by sail number by first stating "sail" followed by the number. Failure to make a broadcast or to time it accurately will not be grounds for a request for redress. This changes RRS 62.1(a).

11. CHANGE OF THE COURSE

11.1 The race committee may only shorten the course for a class when the first boat in the class completes three legs of the course.

12. THE FINISH

12.1 The finishing line for the Melges 24 and J70 will be between a staff displaying an orange flag on a race committee vessel at the port end and a white mark at the starboard end. Marks 4s and 4p are not considered marks of the course on the downwind leg to the finish.

12.2 The finishing line for the VX One will be between a staff displaying an orange flag on a race committee vessel at the port end and a white mark at the starboard end. Mark 3p must be kept to port before proceeding to the finish line.

13. TIME LIMITS

13.1 A race shall be abandoned in which no boat after the start of her class passes the windward mark within 30 minutes or no boat sails the course and finishes within 90 minutes. Boats not finishing within 15 minutes of the first boat in her class to sail the course and finish will be scored Did Not Finish without a hearing. This changes RRS 35, A4.1 and A4.2.

14. PENALTY SYSTEM

14.1 See SI 1.2 and 1.3.

15. SUPPORT PERSONS AND VESSELS

15.1 Support persons will register and provide their cell phone number and vessel identification at the check-in desk in order to be eligible for entry to the regatta venue and to have access to regatta events.

15.2 Support persons vessels shall remain outside of the areas where boats are starting and racing as well as outside race committee and jury vessels from the time of the warning signal for the class until all boats have finished or retired, or the race committee signals an abandonment, or to provide assistance in an emergency.

15.3 Support vessels will monitor the race committee VHF frequency. The race committee or jury may warn by VHF radio a *Support Person/Vessel* who in their opinion is about to infringe the race area before acting under RRS 3, 60.3(d) or 64.4.

16. PROTESTS AND REQUESTS FOR REDRESS

16.1 As soon as practicable after a boat's finish of the race, a boat intending to protest, request redress or retiring from that race will notify the race committee signal vessel of their intent, or if impracticable by contacting the race officer by cell phone.

16.2 Actions of the Race Committee including competitor intent to protest and request for redress will be posted on the official notice board prior to the protest time limit. The protest time limit is 90 minutes after the last boat to finish in her class, AP over A is displayed on the water, or 60 minutes after AP over A is displayed ashore.

16.3 Protests and request for redress shall be submitted on Yachtscore. The competitor must log in and do this in the owners corner. Protests will be scheduled to be heard approximately in the order of submission of completed protest. The notices of protests and the schedule of hearings will be posted on the protest section of the Official Notice Board no later than 10 minutes after the protest time limit. Parties and witnesses for protests should report to the lobby area of SALM at the scheduled time of the hearing for that protest and wait in the vicinity until called.

16.4 On the last scheduled day of racing a request for redress based on a jury decision or race committee action shall be delivered no later than 30 minutes after the decision or action is posted or the protest time limit, which is later. This changes RRS 62.2.

17. SCORING

17.1 Six races are scheduled. When three races have been completed a boat's score will be the total of her race scores less her worst score. If there are less than three races completed, a boat's score will be the total of her race scores.

17.2 Melges 24 and J/70 Corinthian Divisions will be established. For a boat to be eligible, at check in the person in charge (RRS 46) and crew must sign an affidavit that they are eligible as World Sailing Category 1. The Corinthian Divisions shall be scored using competitor's fleet scores.

17.3 Scoring inquiries will be submitted from the main page of the regatta Yachtscore page.

18. BACARDI INVITATIONAL WINTER SERIES SCORE

18.1 There will be class first, second and third place overall prizes for the BACARDI INVITATIONAL WINTER SERIES.

18.2 A boat's score for the SERIES will be her score from Event 3 added to the score of either Event 1 or 2, whichever is lower.

19. SAFETY REGULATIONS

19.1 Before the first start of the day, boat crews will check-in when entering the gated docks where their boats are berthed. There will be no check-in on the water. Boats failing to check in will be scored DNC.

20. REPLACEMENT OF CREW OR EQUIPMENT

20.1 During a regatta, the number of crew must remain the same. Substitution of crew or equipment is not permitted without written approval of the regatta chairman or jury.

20.2 To qualify for the Overall Winter Series, the same person must be at the helm in accordance with the class rules for major championships. The crew may change between regattas.

21. EQUIPMENT AND MEASUREMENT CHECKS

21.1 There will be NO crew weigh-in. The number of crew will be in compliance with class rules.

21.2 If requested by the jury, the person in charge shall promptly submit a valid measurement certificate. Boats may be subject to equipment inspection and measurement at any time, if ordered by the jury following a valid protest.

22. EVENT ADVERTISING

22.1 Boats will display the event sponsor's advertising on the hull in compliance with World Sailing REGULATION 20, ADVERTISING CODE. Materials will be supplied at check in.

23. HAUL-OUT RESTRICTIONS

23.1 Melges 24 and J/70 boats will not be hauled out during the regatta without the written permission of the race officer or the jury. VX One shall have permission to haul out daily at the U.S. Sailing Center only.

24. BOW NUMBERS

24.1 J/70 class boats at check in will be provided with bow numbers and instructions for their application.

24.2 Melges 24 and VX One class bow numbers will be submitted on yachtscoring.

25. RADIO COMMUNICATIONS

25.1 Except in an emergency, a boat that is racing shall not make voice or data transmissions nor receive voice or data communications that is not available to all boats.

26. PRIZES

26.1 There will be first, second and third place prizes for J/70, Melges 24 and VX One Classes. Corinthian Division, first through third regatta prizes for the Melges 24 and J/70 Classes

27. DISCLAIMER OF LIABILITY

27.1 In addition to RRS 4 Decision to Race, the safety of a boat and her entire management shall be the responsibility of the owner(s) and the owner's representative. Sailing is an activity that has an inherent risk of damage and injury. Competitors in this event are participating entirely at their own risk. The regatta organizers (organizing authority, race committee, protest committee, host club, sponsors, or any other participating organizing authority or official) will not be responsible for damage to any boat or property or the injury to any competitor, including death, sustained as a result of participation in these events.

27.2 By participating in this event, each competitor agrees to release the regatta organizers from any and all liability associated with participation in this event to the fullest extent permitted by law.

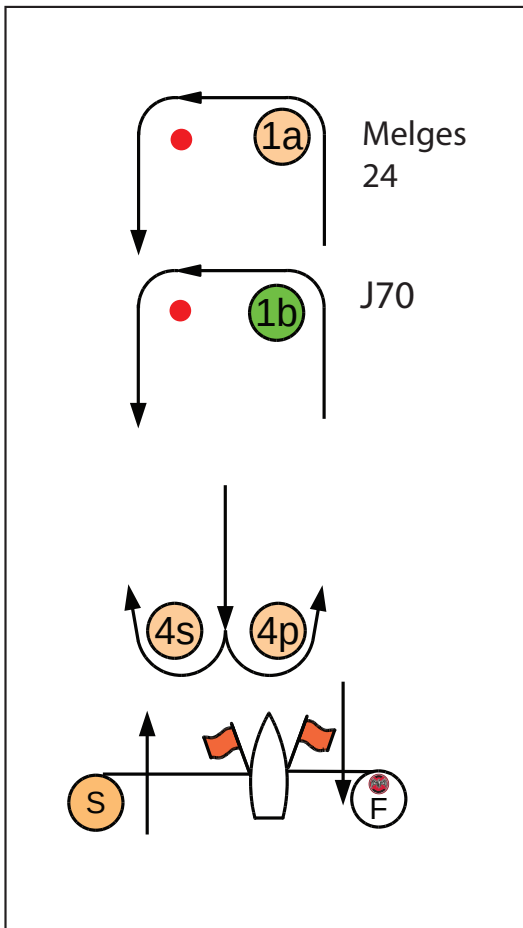
28. INSURANCE

28.1 Each participating boat shall be insured with valid third-party insurance with a minimum cover of \$300,000 USD per incident or the equivalent.

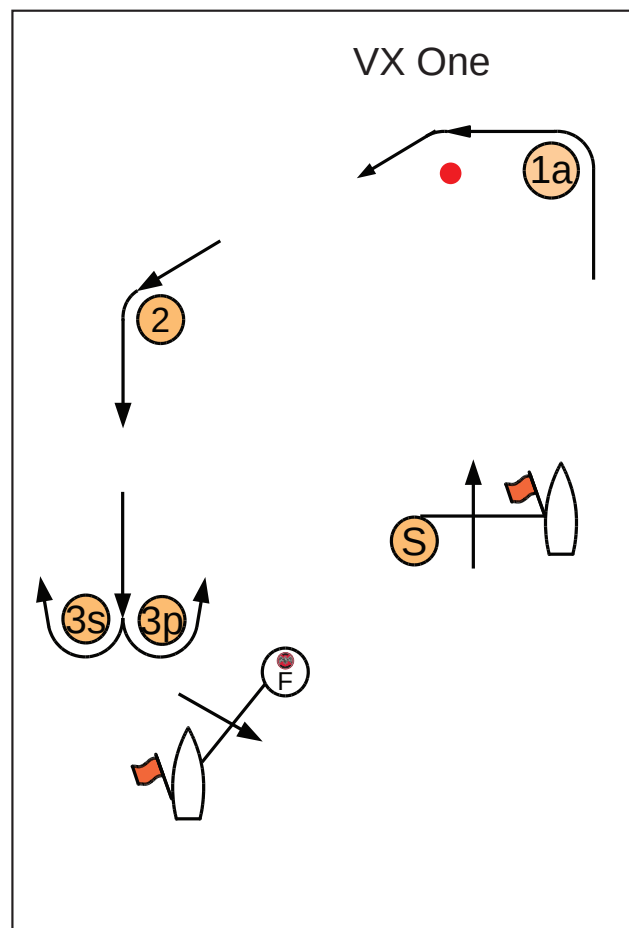
29. INFORMATION CONTACTS

EVENT DIRECTOR:	SARA ZANOBINI	sara@bacardiinvitational.com
REGATTA CHAIRMAN:	MARK PINCUS	mwpincus@aol.com
PRINCIPAL RACE OFFICER:	CAROL EWING	305-785-4777
SHAKE A LEG MIAMI:	KARIS STARKE	305-728-4717

MELGES 24 & J70
Course 2 - One Lap
Course 4 - Two Laps

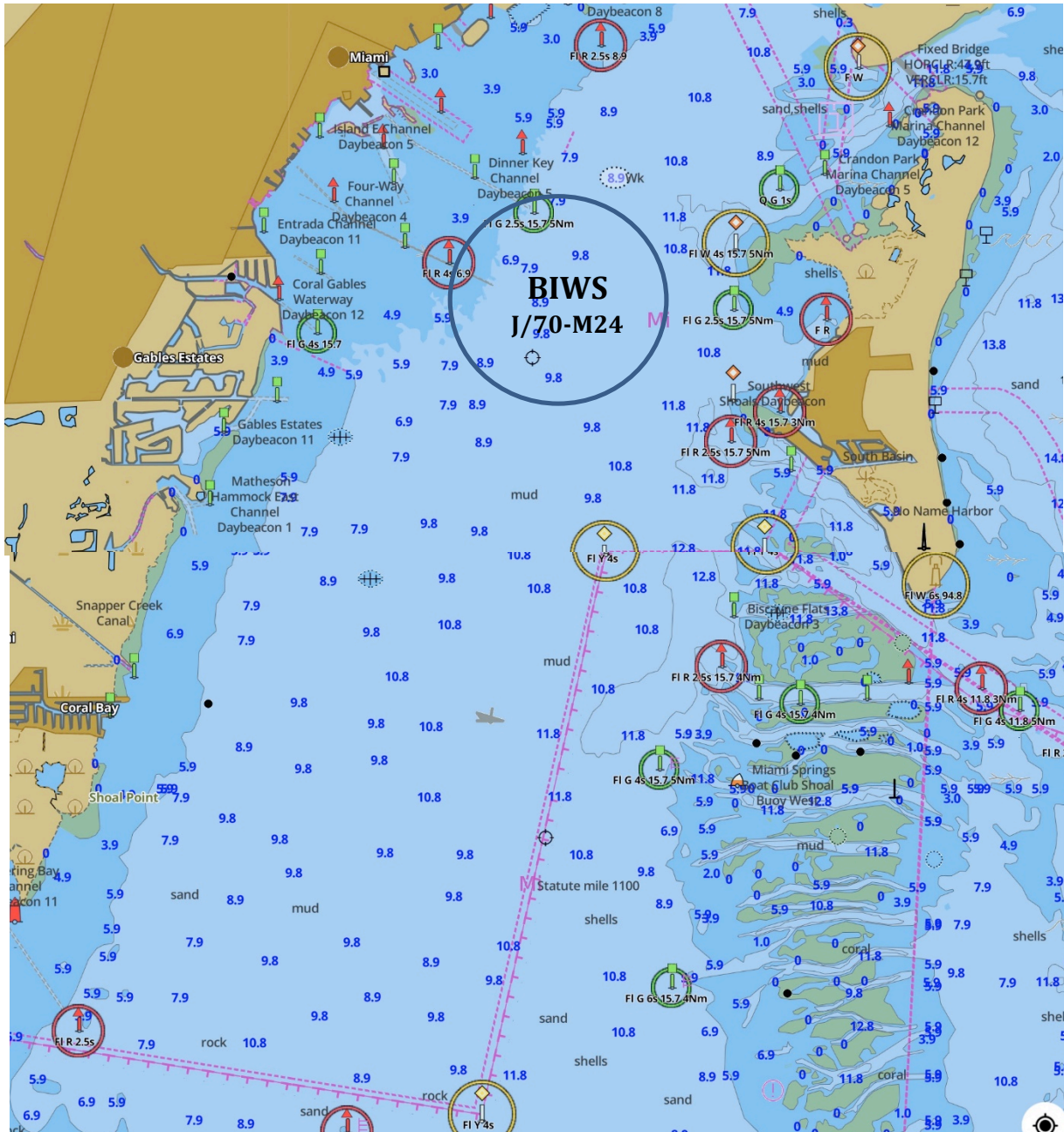


VX ONE
Course 3 - One Lap
Course 5 - Two Laps



2020 BACARDI INVITATIONAL WINTER SERIES 1

Race Circle



Circle	Fleets	Diameter	VHF
BIWS	J70 - Melges 24 VX One	1.5 nm	72